

International Manganese Institute annual conference

GLOBAL ECONOMY

*'Soft patch'*

*or*

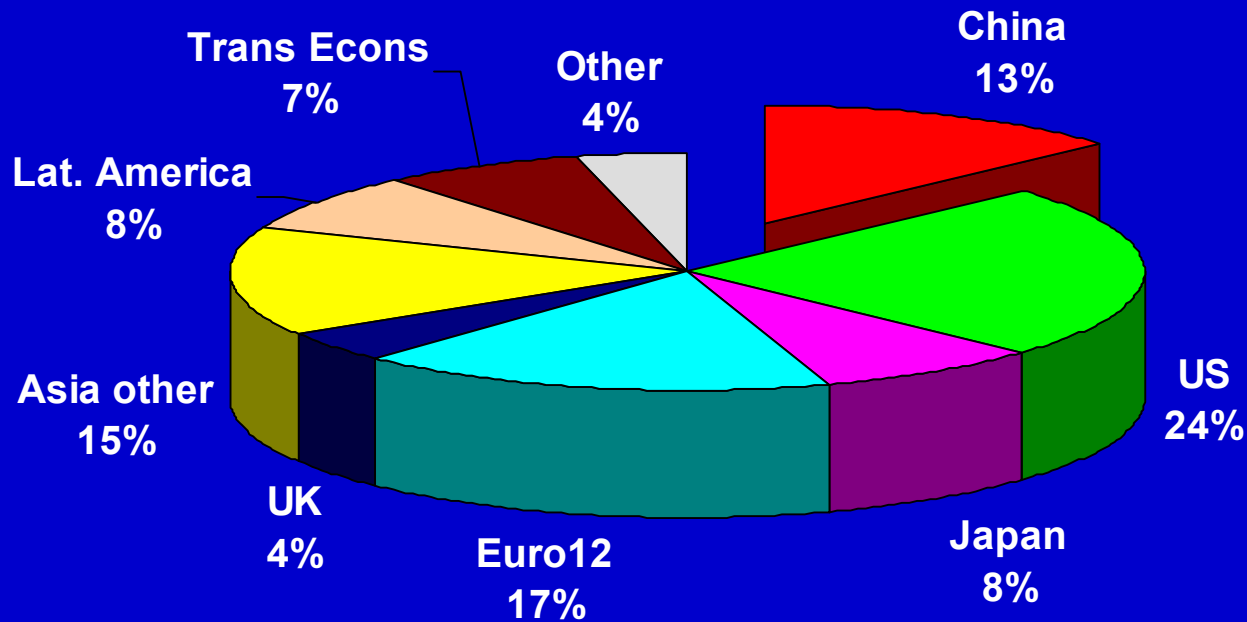
***HARD***

***LANDING?***

Bill Jamieson  
Executive Editor  
THE SCOTSMAN

# THE WORLD WE'RE IN

## % share of global GDP

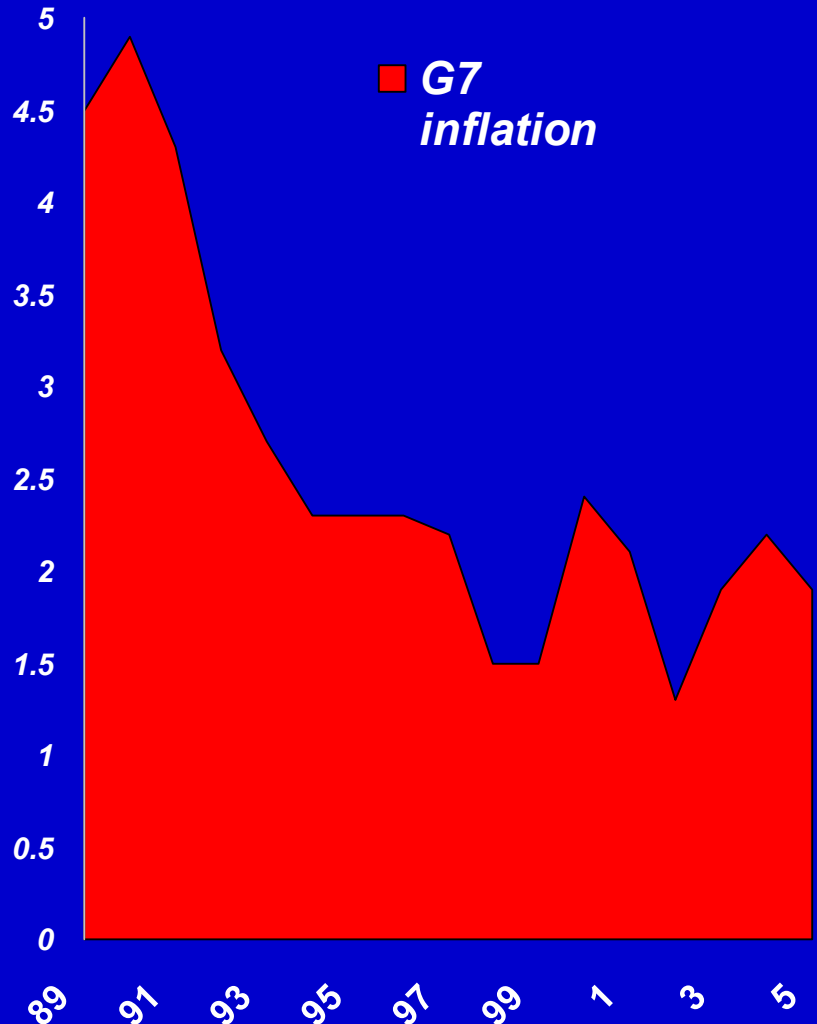


# WORRY POINTS

- 1. *Dearer oil***
- 2. *Inflation threat***
- 3. *US trade deficit***
- 4. *Household debt***
- 5. *Weak Euro zone***
- 6. *CHINA SLOWDOWN***

## HOW WE GOT HERE 1: **FALLING INFLATION**

**How G7  
inflation  
has  
tumbled**



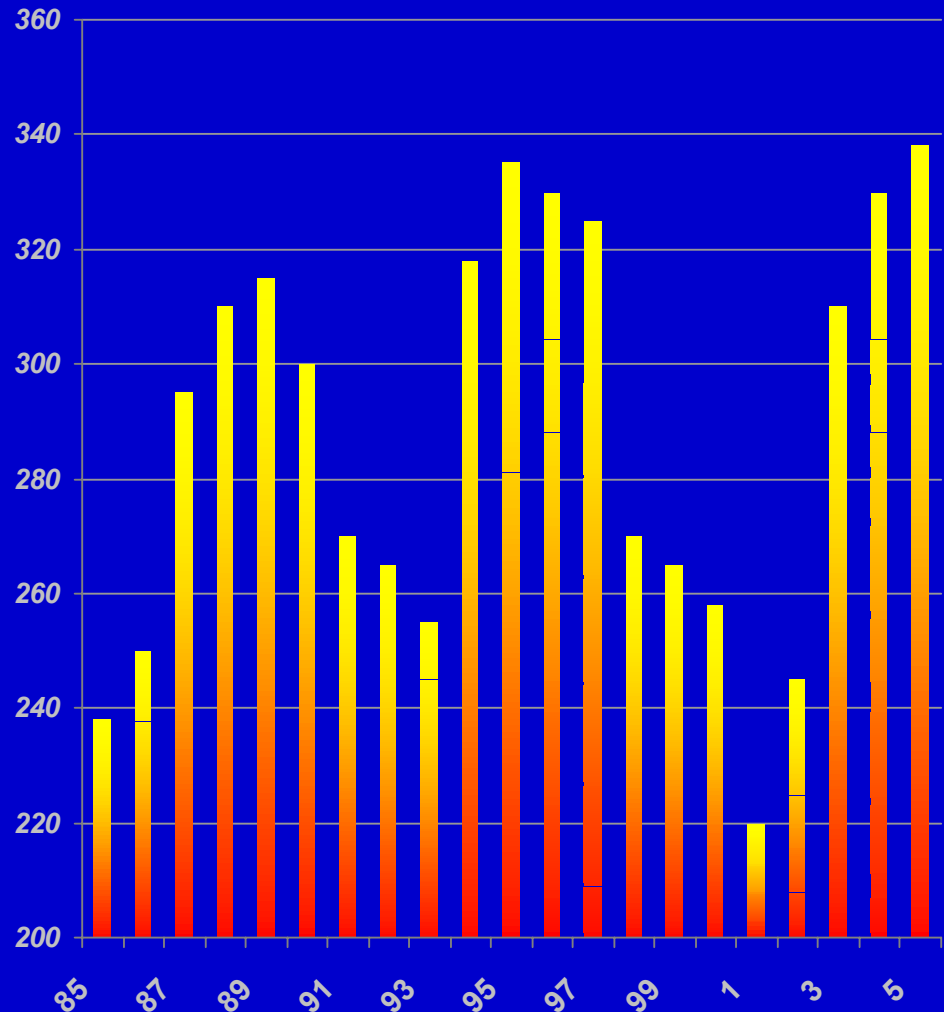
## HOW WE GOT HERE 2: **TUMBLING RATES**

**How long  
term  
interest  
rates  
have  
plunged**



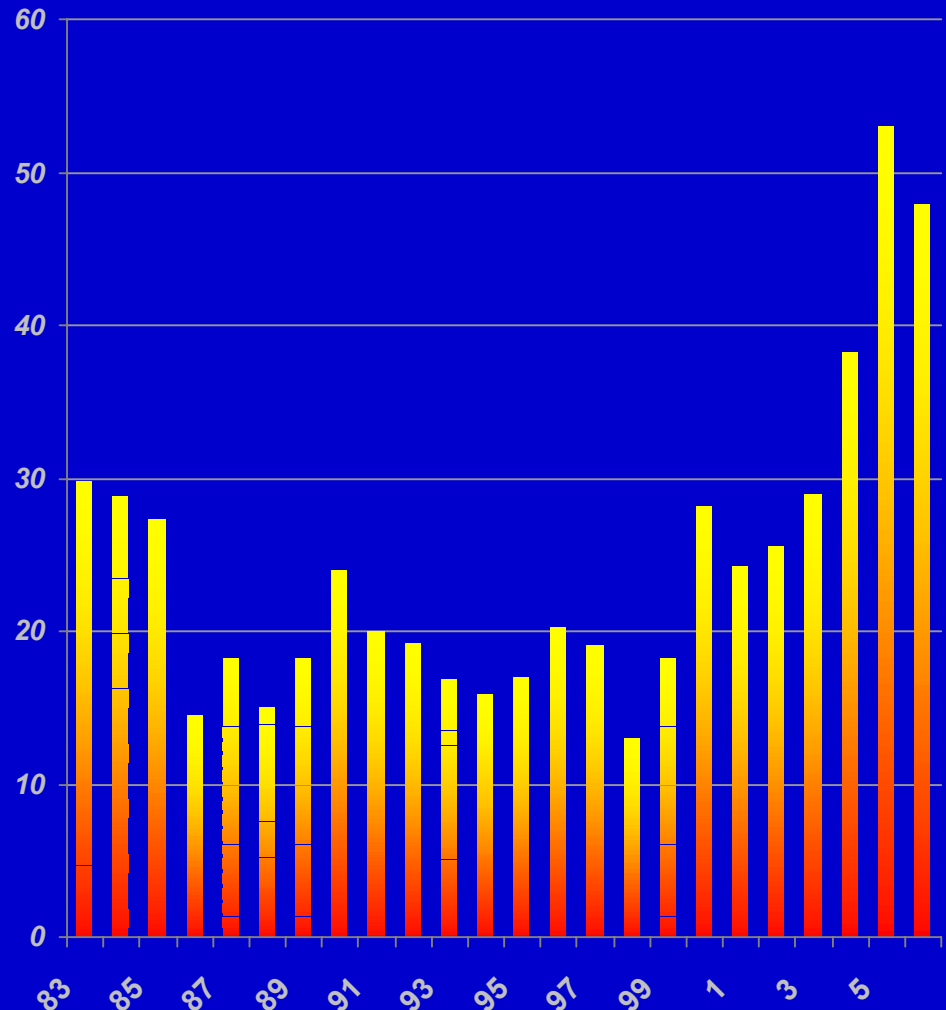
## HOW WE GOT HERE 3: RAW MATERIALS BOOM

**How  
raw  
materials  
prices  
have  
soared**



## HOW WE GOT HERE 4: OIL PRICE CLIMBS

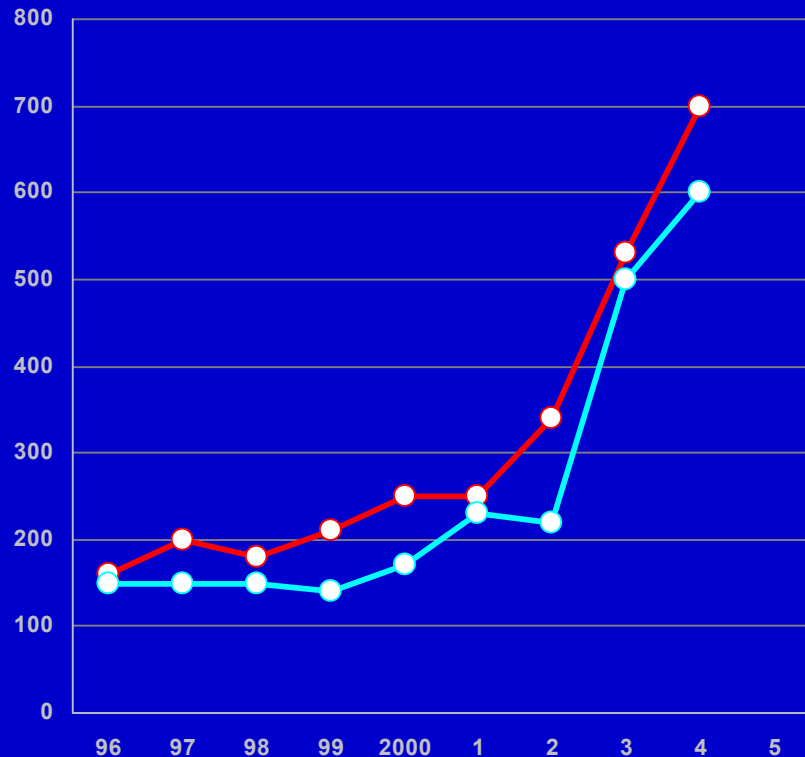
**How the  
oil price  
has  
soared**



# CHINA MERCHANDISE TRADE

—●— **Exports**  
—●— **Imports**

3 month summ.,  
\$bns, sa



# ROAR OF THE CHINA DRAGON

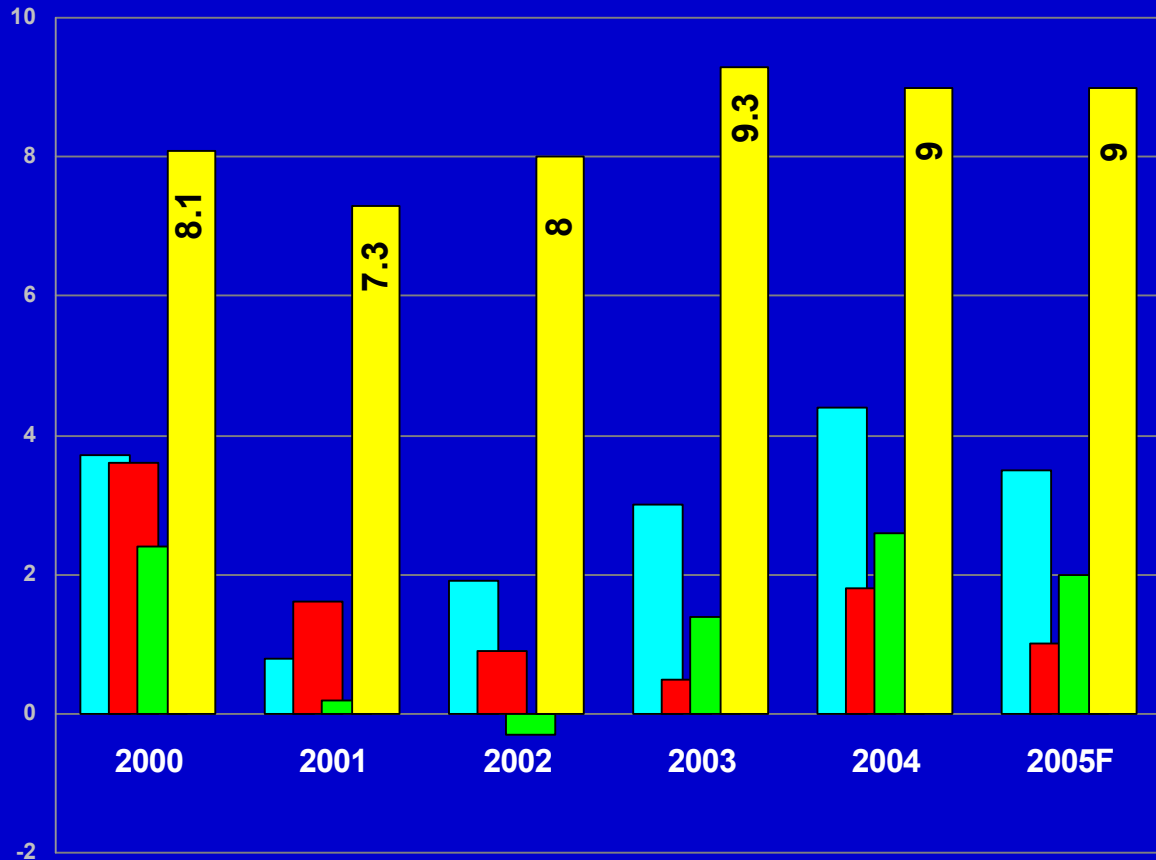
Annual rate of GDP growth (%)

**US**

**Euro  
12**

**Japan**

**China**

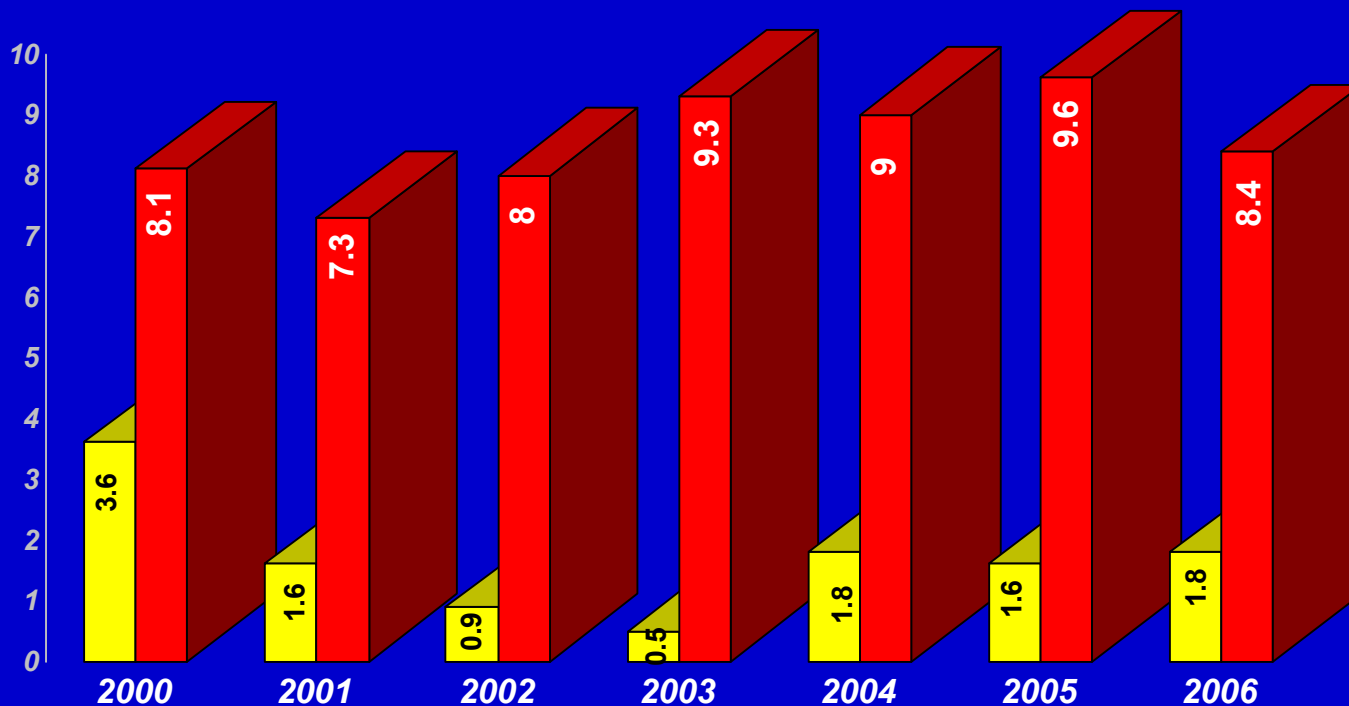


# CHINA AND EURO ZONE COMPARED

Annual growth in GDP (%)

■ Euro zone 12

■ China

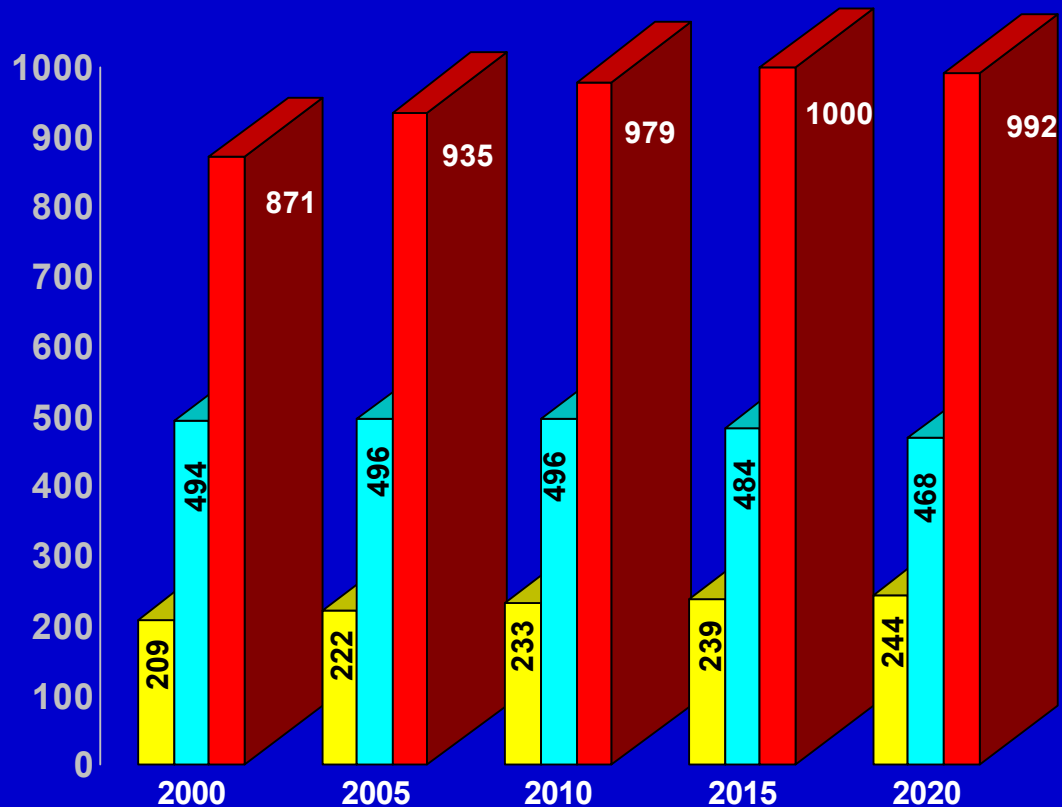


# WORKING AGE POPULATION (million)

■ **N America**

■ **Europe**

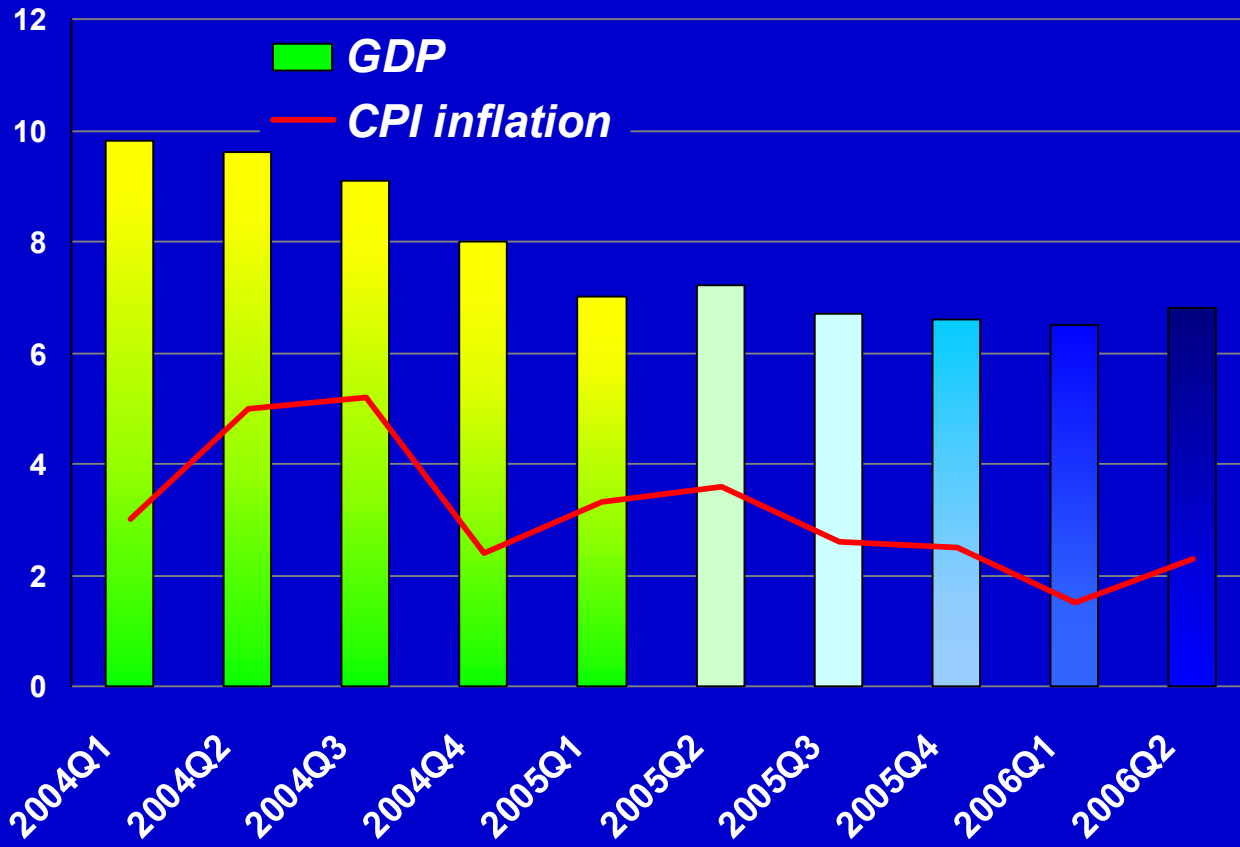
■ **China**



# **SOFT PATCH - FOR NOW**

- ***US output slowdown***
- ***weakness across Euro zone***
- ***Surprises to the downside***
- ***Poor corporate investment***
- ***Exchange rate uncertainties***

# GOING FORWARD: CHINA SLOWDOWN



# GROWTH GOING FORWARD

